

Performance space

Size: 12m wide x 12m deep (preferred measurements, smaller is possible if discussed and agreed upon in advance)

bare or black box, to be discussed for each venue

Floor covered with black marley

Light

We bring

1 DMX512-device [LanBox / Ma-node]

1 laptop

We need from the theater

10 PC 1kW with barndoors, OW;

4 asymmetrical cyclights 1kW, L109, with barndoors if possible

8 zoomprofile 15-35 1kW, OW

10 PAR64 CP60, OW, with floorstands

10 Fresnell 1 KW, OW

1 follow spot or extra zoomprofile 15-35 1Kw at regie

45 dimmer- channels

some blackwrap, fluorescent and black alu tape might be needed.

Sound

We bring

1 laptop

1 soundcard, 2 line-out on balanced xlr or jack

We need from the theater

Front of house : 3 way or 4 way system

4 wedges on stage : 2 front , 2 back

2 fill-ins behind the audience

amplifiers for these

delay for FOH and audience speakers

2 DI to connect laptop on stage to the system

1 mixing desk

Video - projection

We bring

1 laptop

1 adapter from laptop to vga

We need from the theater

Depending on venue, but normally we will project text on the rear side of the scene.

The projector needs to be strong enough (6500 lumens) to project on black molton if a black box is used. The exact place of the projector will be decided during build-up.

Sketches On Scarlatti

A performance by David Hernandez



Set-up time

Depending on circumstances, we will need 4 hours of set-up, with the help of 3 technicians. We assume that all equipment is present from start.

We will want to rehearse from 15h00 to 19h00.

Afternoon is for rehearsal: 1 technician on stand-by. Show in the evening: 1 stand-by

any questions ? Please contact

Hans Meijer
Bergstraat 19
B-3360 Bierbeek
PH/F +32 16 49 03 64
mob +32 495 32 54 98
hans3m@gmail.com

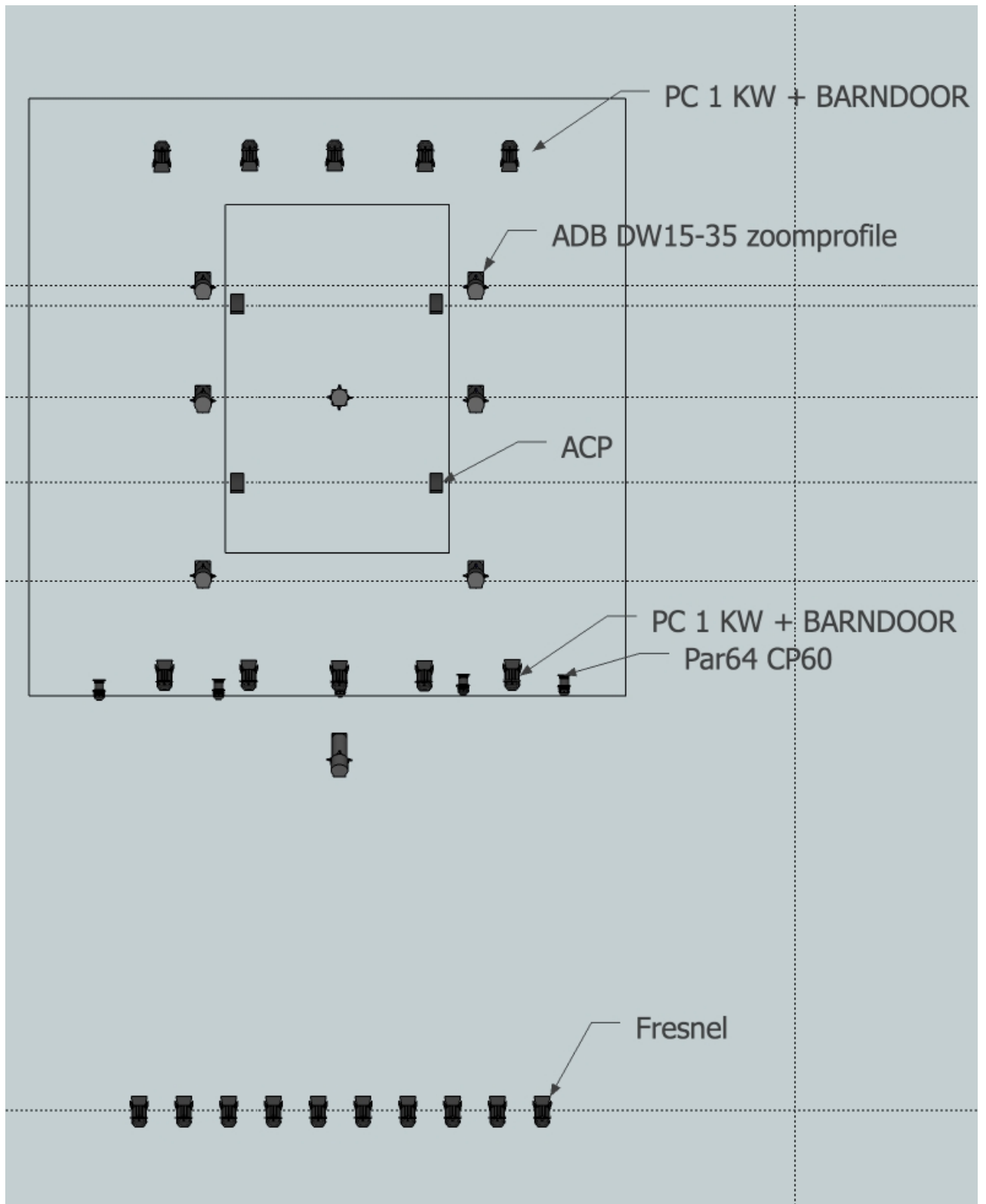
De Meyer Yvan
Manewaarde 72
B-9880 Aalter
MOB +32 476 40 26 84
yvan@dmy.be

If for any reason there are issues concerning this rider, please contact us, we always will try to make an arrangement together with you.

In addition to this technical rider detailed setup plans for light will be sent after receiving dwg of pdf files of the location

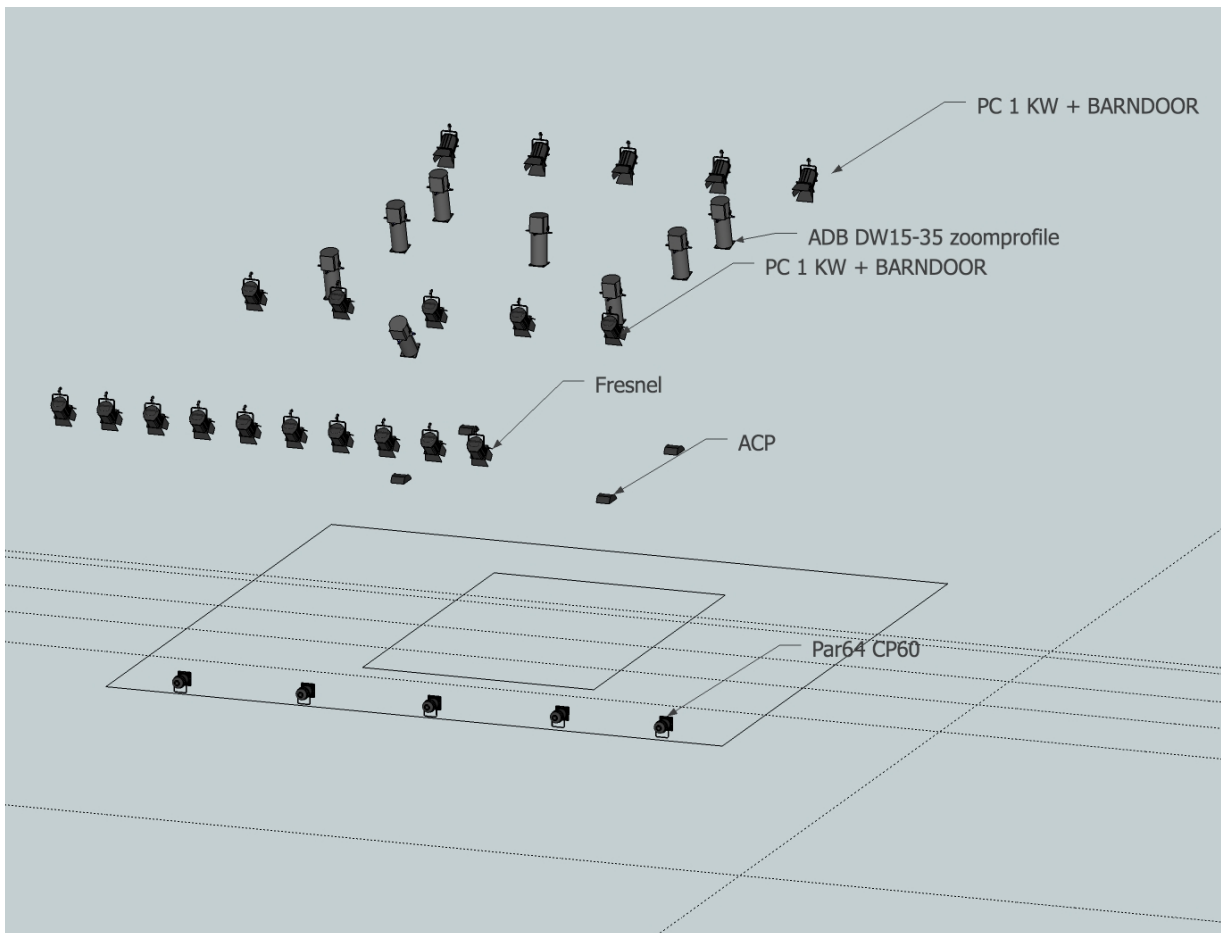
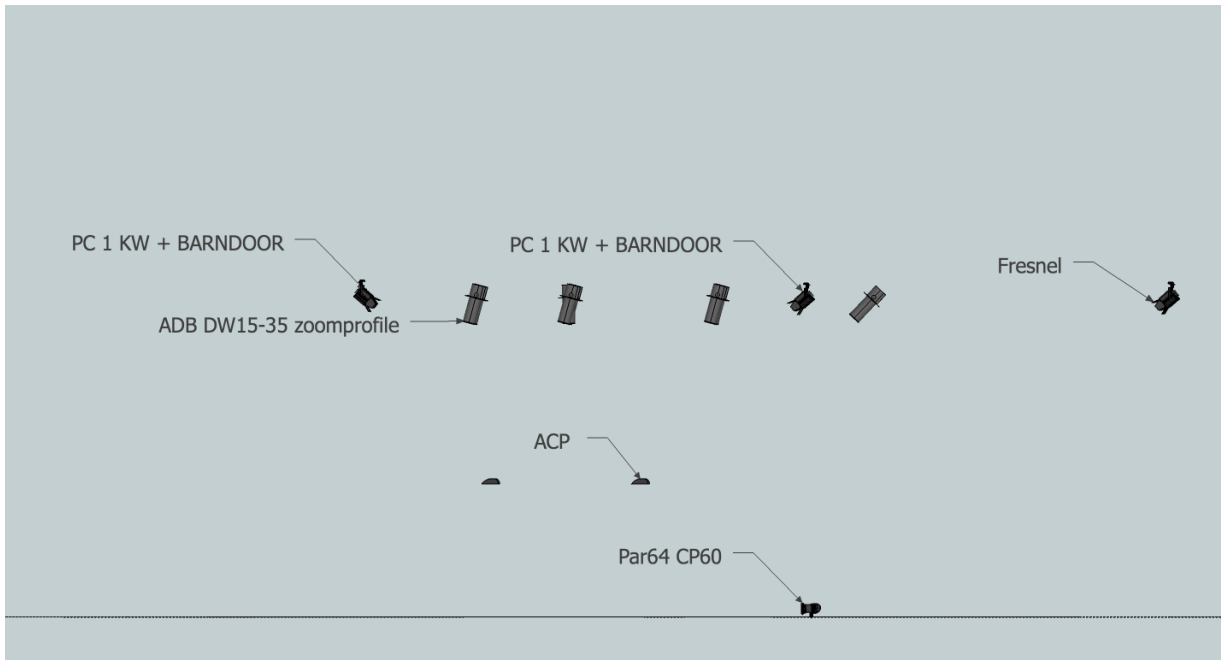
Sketches On Scarlatti

A performance by David Hernandez



Sketches On Scarlatti

A performance by David Hernandez



Sketches On Scarlatti

A performance by David Hernandez